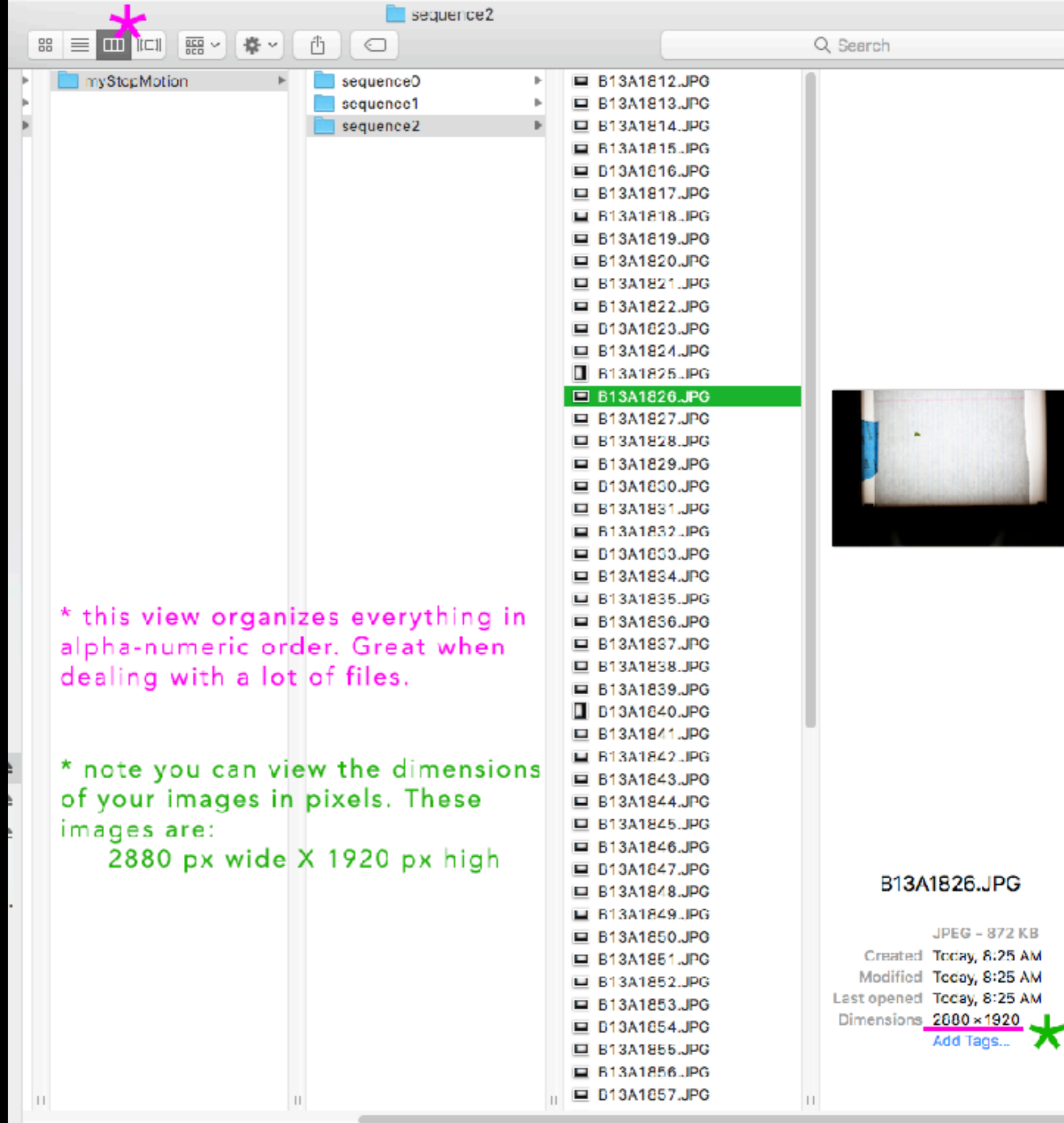


making a stop motion in premiere pro

- 1) Make a folder to put your project in.
- 2) Make sub folders for each sequence
- 3) Note the dimensions of your images.



1920 x 1080 px

Name: myStopMotion

Location: /Volumes/makingAreWe/QC/2018/myStopMotion

Browse...

General

Scratch Disks

Ingest Settings

Video Rendering and Playback

Renderer: Mercury Playback Engine GPU Acceleration (OpenCL)

Video

Display Format: Timecode

Audio

Display Format: Audio Samples

Capture

Capture Format: HDV

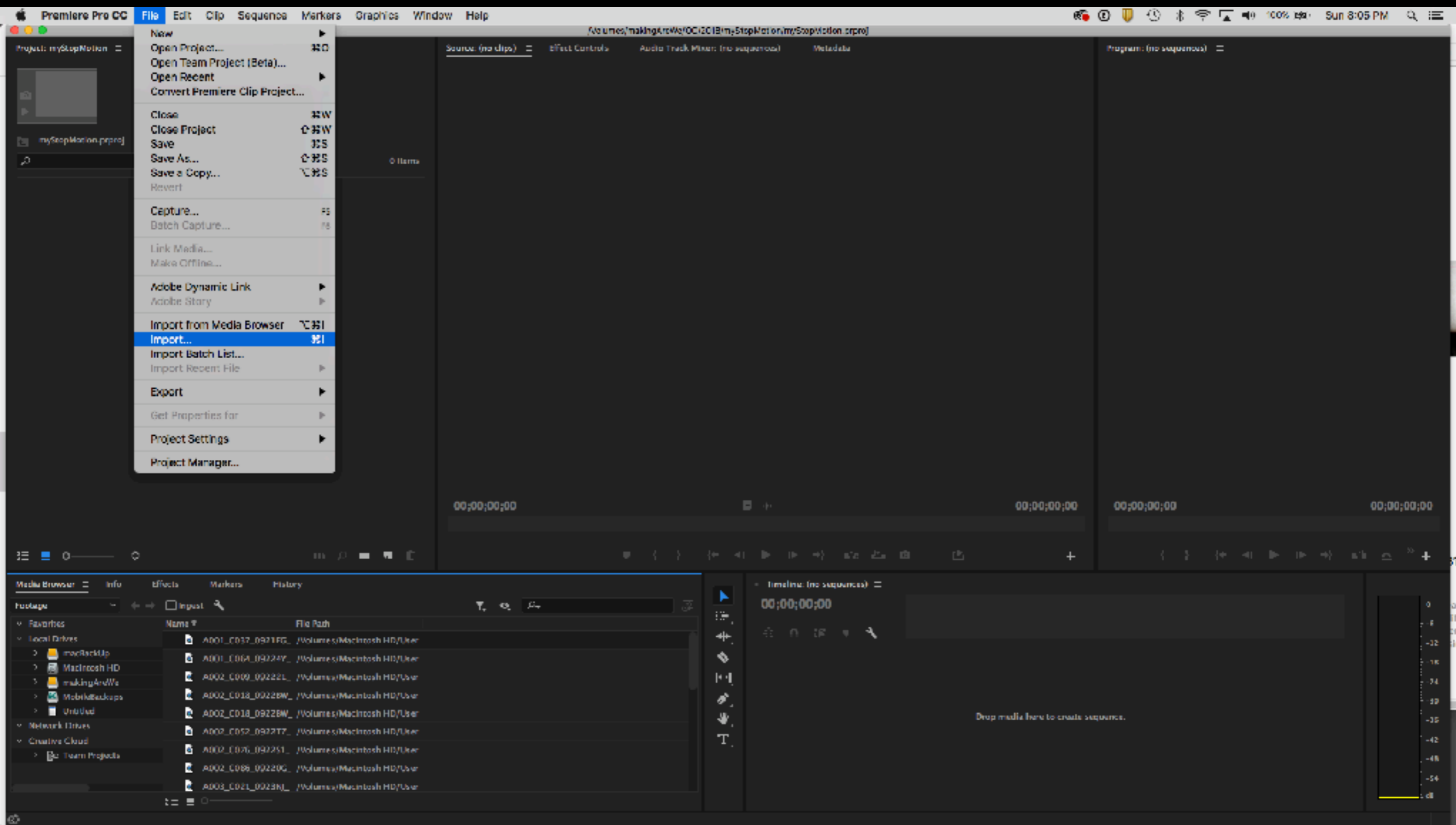
 Display the project item name and label color for all instances

You should set the FILE PATH. And that all of your assets are in your project folder.

Cancel

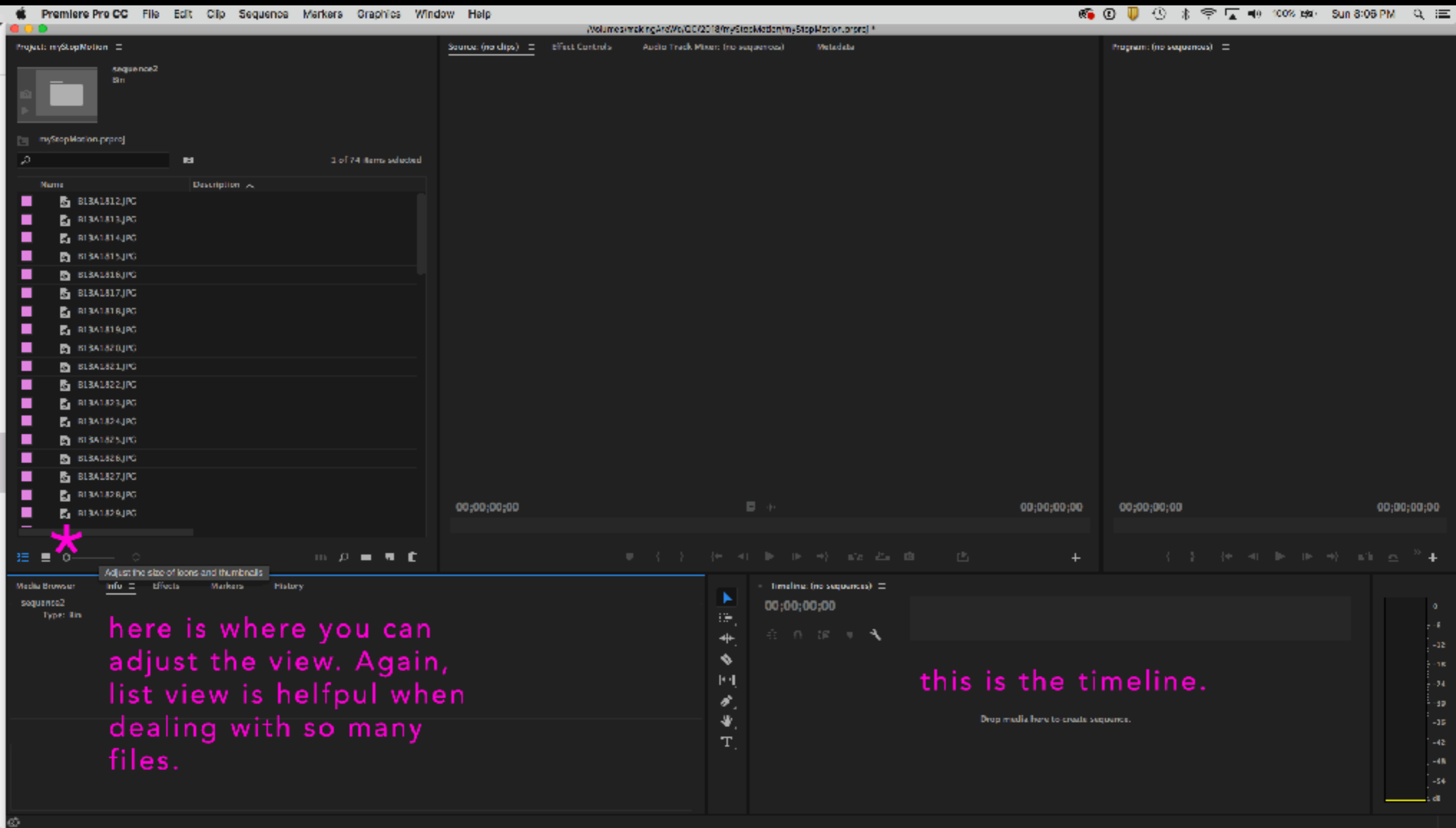
OK

4) Open a new project.



File > Import...

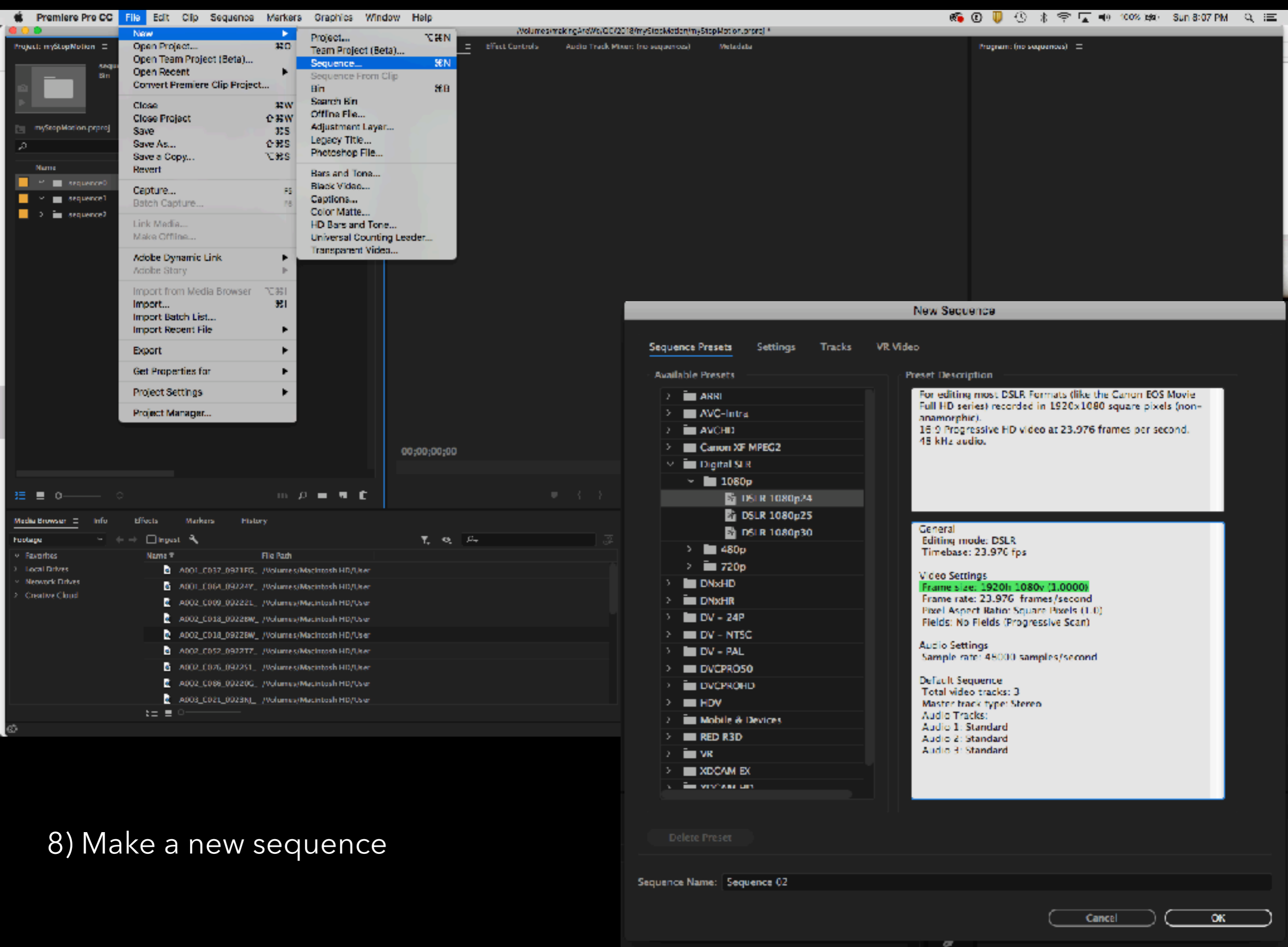
5) Import the sequences



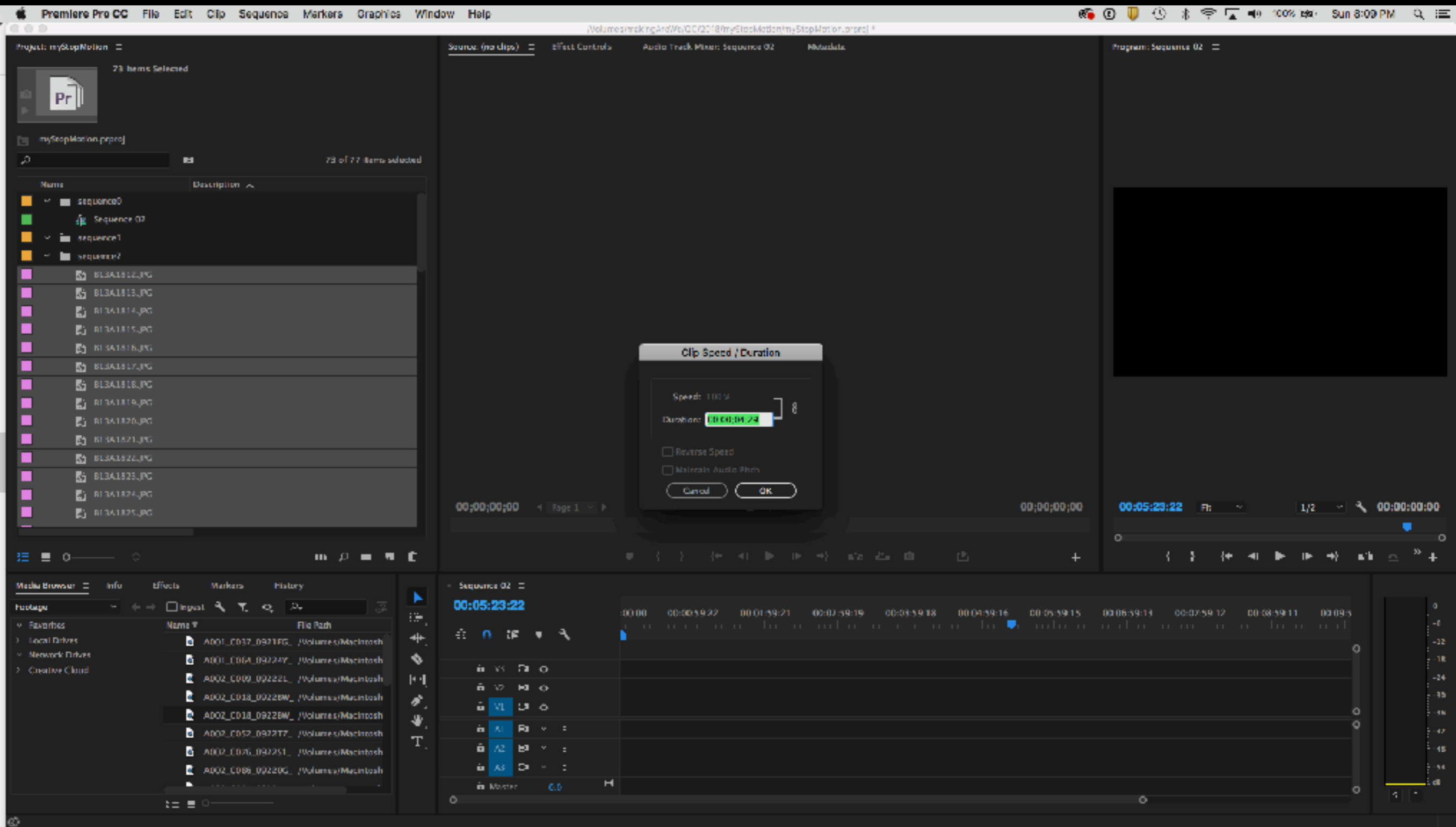
6) Organize your files.

7) Make bins - folders for each sequence

CTRL + click > New Bin

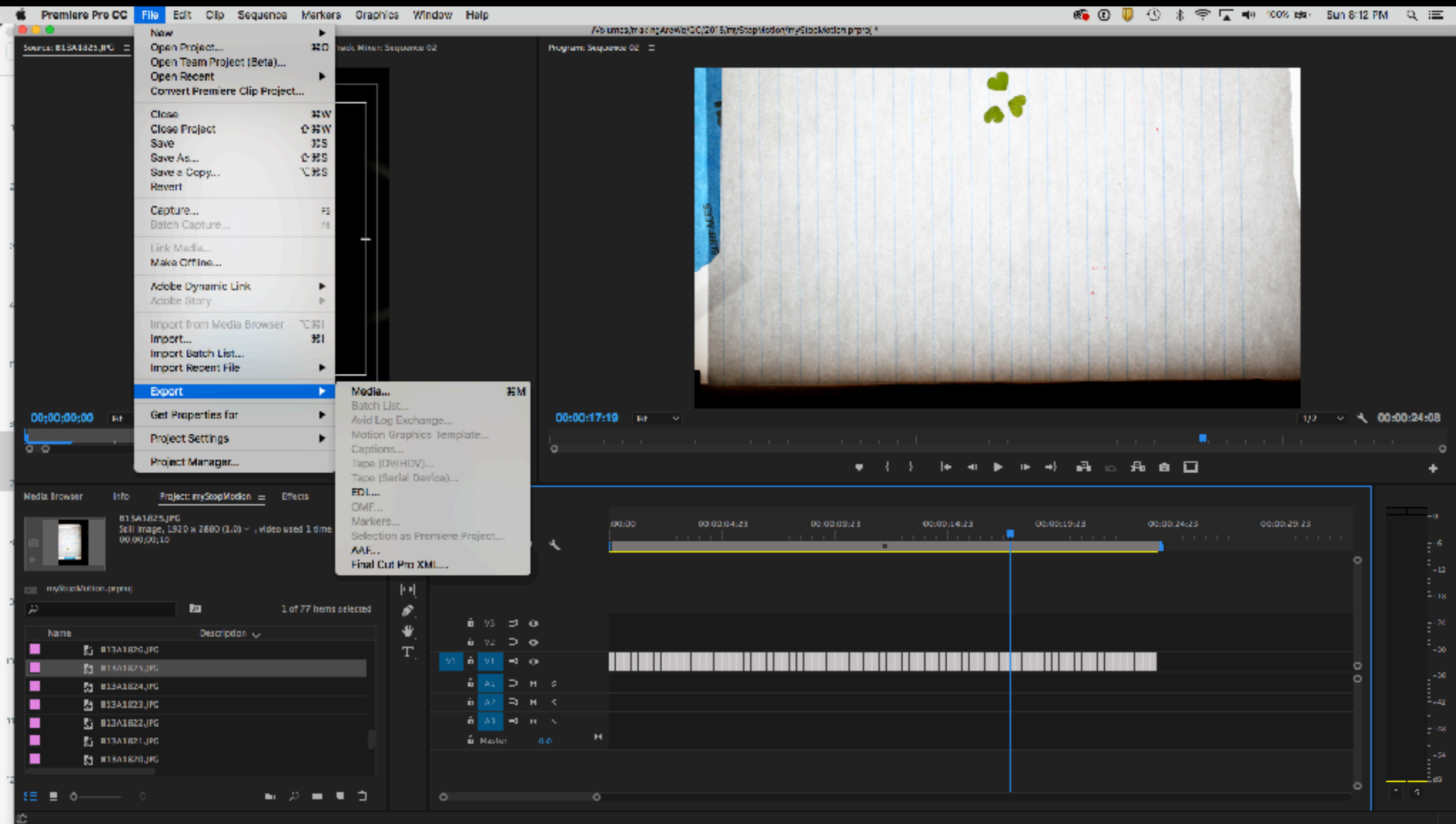


8) Make a new sequence



9) Change the duration of each image.

Hold down CONTROL + click on the flies.
Select Clip Speed / Duration



10) Export the images in the sequence as a video file

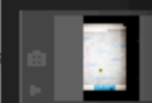
Export Settings

Source: B13A1822 Source Output Source Scaling: Scale to Fit



00:00:00:00

Media Browser



myStopMotion

Name

- B13A1822.JPG
- B13A1821.JPG
- B13A1820.JPG

00:00:13:03 00:00:24:08

Source Range: Work Area



Export Settings

Match Sequence Settings

Format: H.264

Preset: HD 1080i 29.97 (1.33 PAR)

Comments:

Output Name: Sequence02.mp4

Export Video Export Audio

Summary

Output: /Volumes.../2018/myStopMotion/sequence2/Sequence02.mp4
1440x1080 (1.333), 29.97 fps, Upper, 00:00:24:10
VBR, 2 pass, Target: 24.00 Mbps, Max: 50.00 Mbps
AAC, 192 kbps, 48 kHz, Stereo

Source: Sequence: Sequence 02
1920x1080 (1.0), 23.976 fps, Progressive, 00:00:24:08
No Audio

Effects Video Audio Multiplexer Captions Publish

Basic Video Settings Match Source

Width: 1920 1080

Height: 1080 1920

Frame Rate: 29.97

Field Order: Upper First

Aspect: HD Anamorphic 1080 (1.333)

TV Standard: NTSC PAL

Profile: Main

Level: 4.1

Render at Maximum Depth

Use Maximum Render Quality Use Previews

Import into project

Set Start Timecode: 00:00:00:00 Render Alpha Channel Only

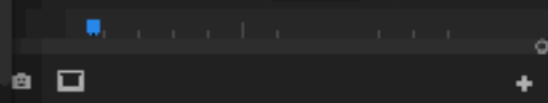
Time Interpolation: Frame Sampling

Estimated File Size: 70 MB

Render Queue Export Cancel



1/2 00:00:24:08



00:00:24:25 00:00:29:23

Timeline and program monitor area showing a single video track with a blue work area bar and a vertical audio waveform on the right.

JKL Navigation :



j



l

slow: "k" + "j"

"k" + "l"

fast: "j" twice

"l" twice

back / forward 1 frame:

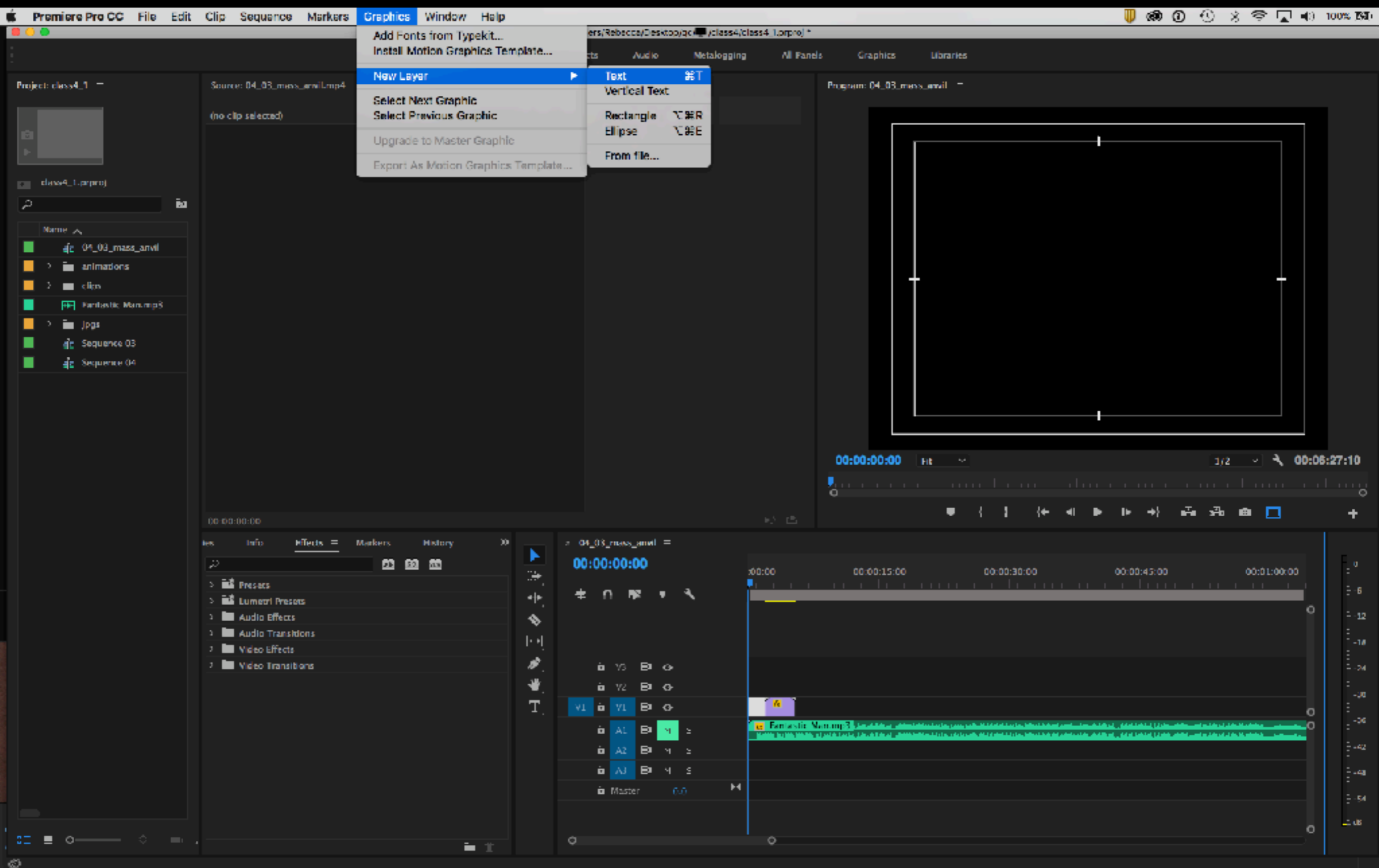


back / forward 5 frames:



next / previous edit points:





Making Titles

Project: class4_1

Source: 04_03_mass_arvil.mp4 Effect Controls Audio Clip Mixer: 04_03_mass_ar

Program: 04_03_mass_arvil

class4_1.prproj

Name

- 04_03_mass...
- animations
- clips
- Fantastic Ma...
- Jpgs
- Sequence 03
- Sequence 04

Master * Graphic - 04_03_mass_arvil * Graphic

Video Effects

- Motion
- Opacity
 - Opacity: 100.0%
 - Blend Mode: Normal
- Time Remapping
- Text
 - Source Text: Minion Pro
 - Regular
 - 100
 - 400
- Appearance
 - Fill:
 - Stroke: 1.0
 - Shadow:
- Transform

00:00:00:00

Graphic

00:00 00:00

New Text Layer

00:00:00:00 Fit 1/2 00:06:27:10

Effects

- Presets
- Lumetri Presets
- Audio Effects
- Audio Transitions
- Video Effects
- Video Transitions

04_03_mass_arvil

00:00:00:00

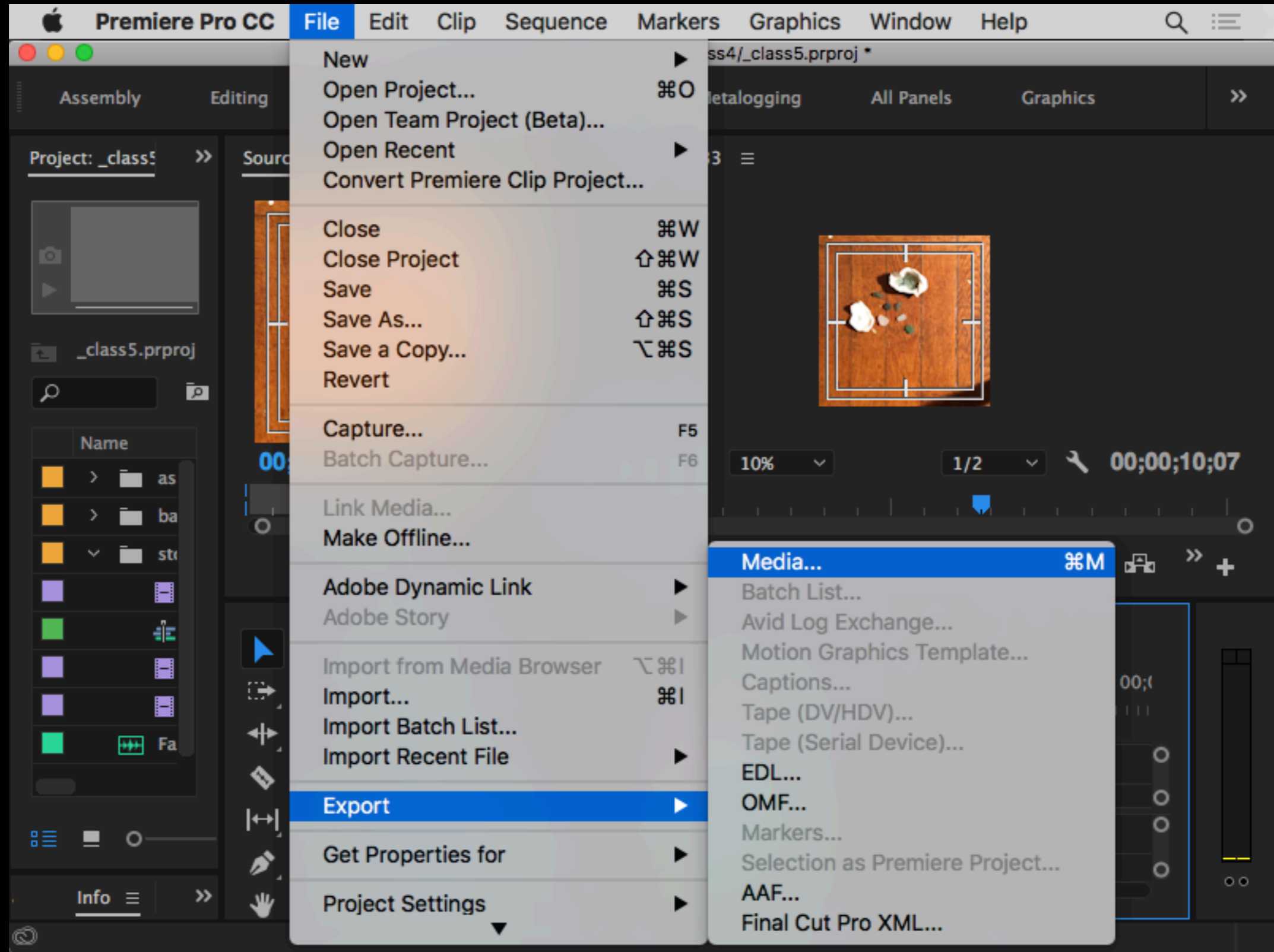
00:00 00:00:15:00 00:00:30:00

New

Fantastic Man.mp3

Type Tool (T)

- V1
- V2
- V3
- A1
- A2
- A3
- Master



Exporting in Premiere - Make sure your sequence is highlighted.

Source Output

Source Scaling: Scale To Fit



This should be 1920 x 1080 for dslr footage

Quicktime or H.264

Export Settings

Match Sequence Settings

Format: H.264

Preset: Match Source - High bitrate

Comments:

Output Name: IMG_0033.mp4

Export Video Export Audio

Summary

Output: /Users/Rebecca/Desktop/qc/.../class4/IMG_0033.mp4
1080x1080 (1.0), 15 fps, Progressive, 00:00:06:25
VBR, 1 pass, Target: 10.00 Mbps, Max 12.00 Mbps
AAC, 320 kbps, 48 kHz, Stereo

Source: Sequence: IMG_0033
1080x1080 (1.0), 15 fps, Progressive, 00:00:06:25
No Audio

click here to assign file path

Effects Video Audio Multiplexer Captions Publish

Basic Video Settings

Match Source

Width: 1,080

Height: 1,080

Frame Rate: 15

Field Order: Progressive

Aspect: Square Pixels (1.0)

TV Standard: NTSC PAL

Profile: Main

Level: 4.1

Render at Maximum Depth

Use Maximum Render Quality Use Previews

Import into project

Set Start Timecode: 00:00:00:00 Render Alpha Channel Only

Time Interpolation: Frame Sampling

Estimated File Size: 8 MB

Metadata...

Queue

Export

Cancel

00:00:02:01



Fit



00:00:06:25



Source Range: Work Area