



David After Dentist, 2009



© 2012 Estate of Nat Finkelstein

**Screen Tests**, 1964-1966  
Andy Warhol

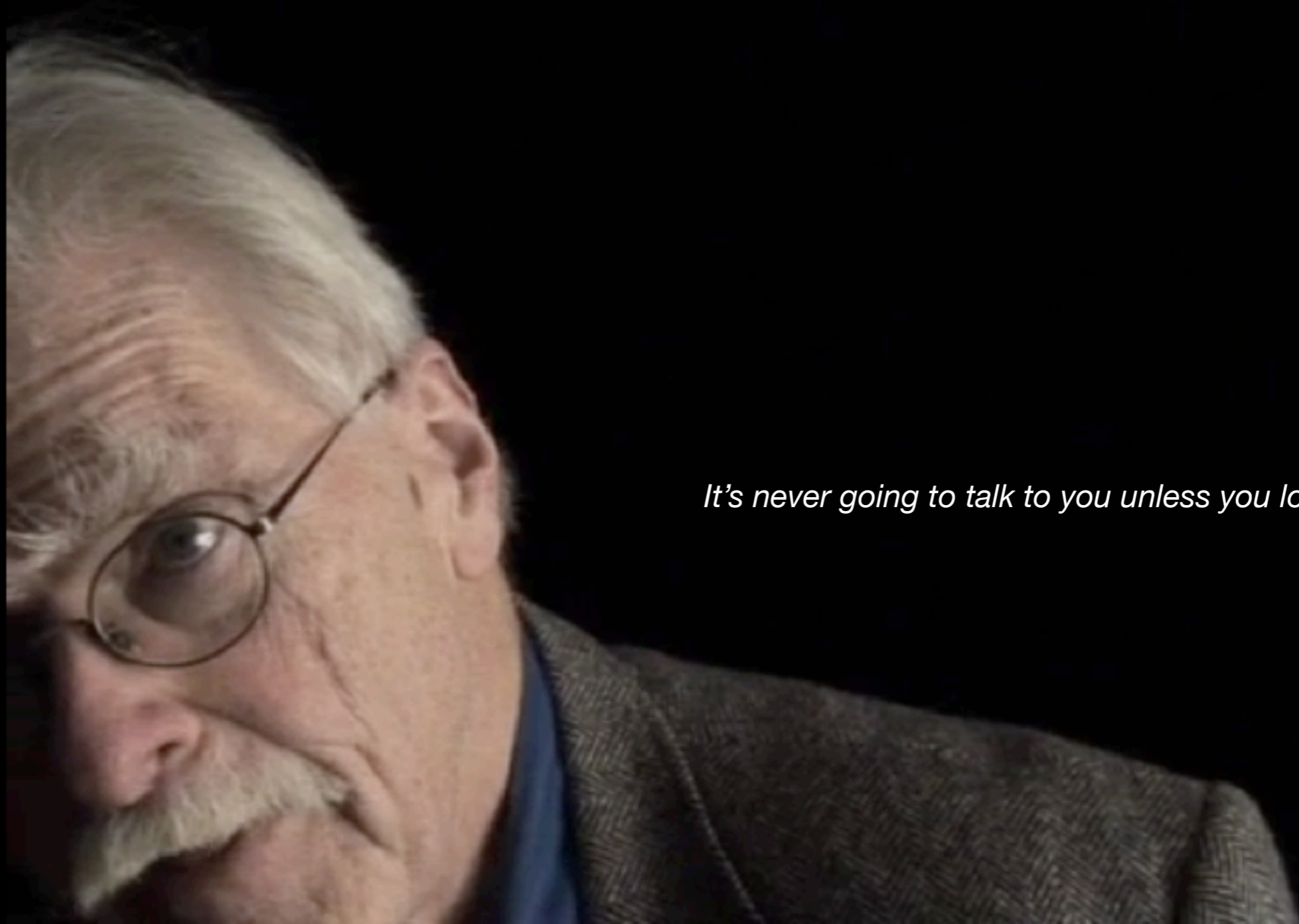


**Portrait of Jason**, 1967

Shirley Jackson



Grey Gardens, 1975  
Albert & David Maysles



*It's never going to talk to you unless you look at it carefully.*

[Desire: A Speaking Portrait of Robert Kelly](#), 2011

George Quasha



Film Portrait, 1972

Jerome Hill



[Last Year Next Year This Year New Year, 2010](#)

John Roberts

making video w/ a DSLR



## Art Department DSLRs:

### **Nikon 3200:**

1920 x 1080

30 fps

H.264, Linear PCM



### **Canon T3:**

1280 x 720

30 fps

H.264, Linear PCM



## Shooting w/ Nikon 3200:



1) push the **LIVE VIEW** button

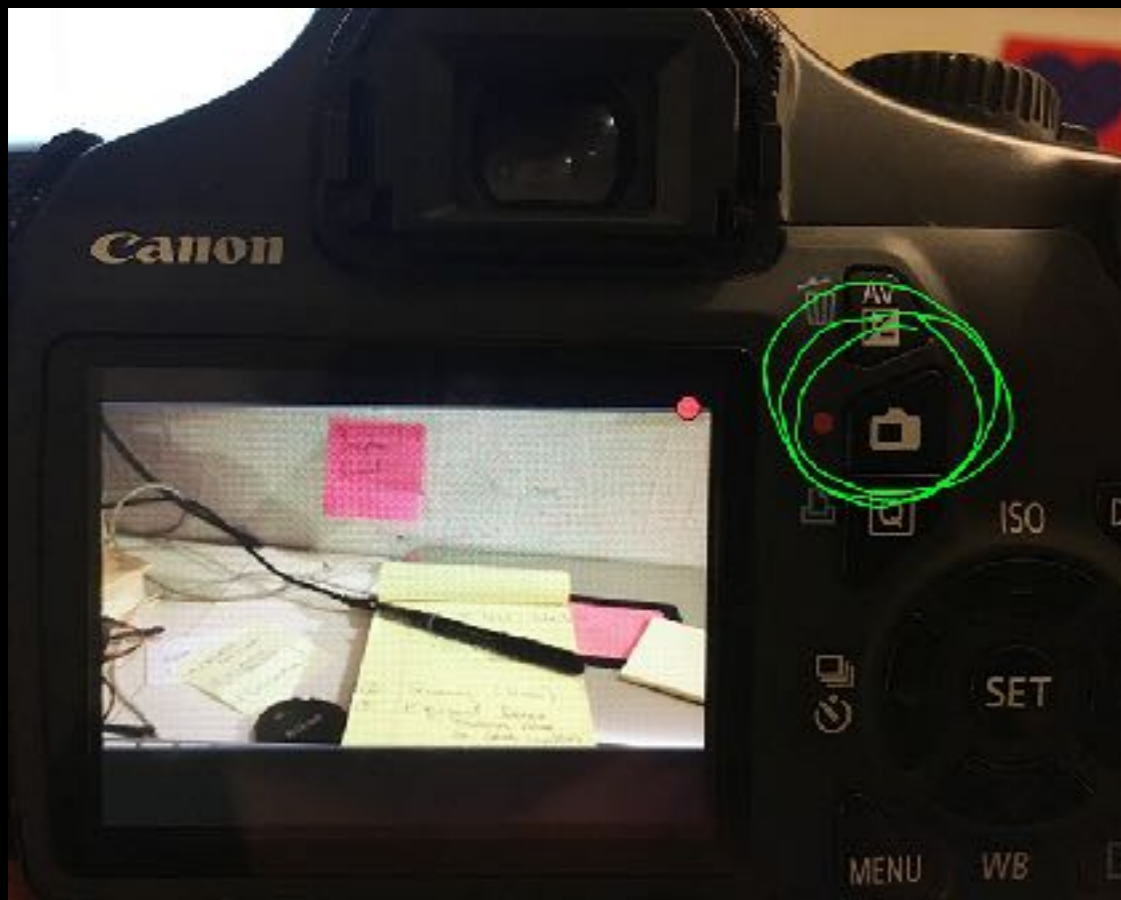


2) push the **RECORD** button

## Shooting w/ Canon T3:



1) set dial to **MOVIE** mode



2) push the **RECORD** button

iso controls the amount of amount of noise.

80

100

125

160

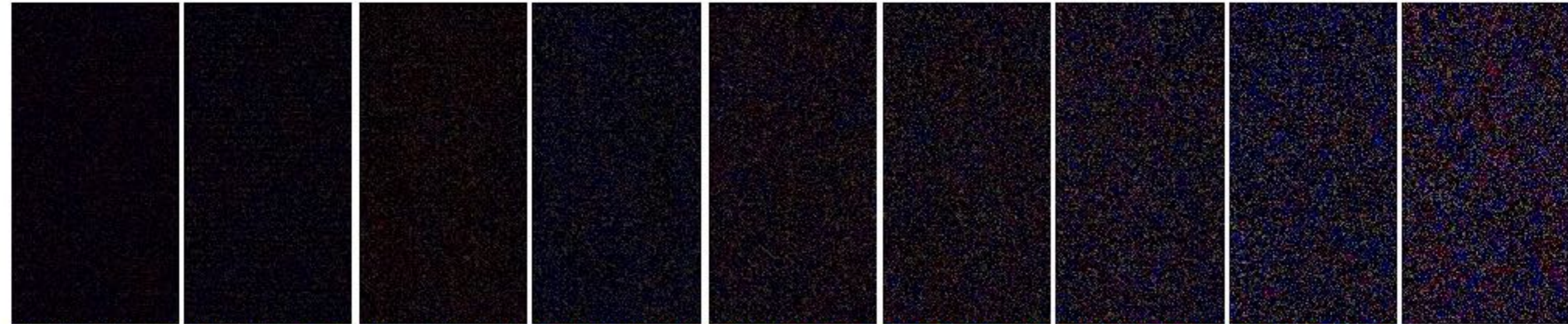
200

250

320

400

500



640

800

1000

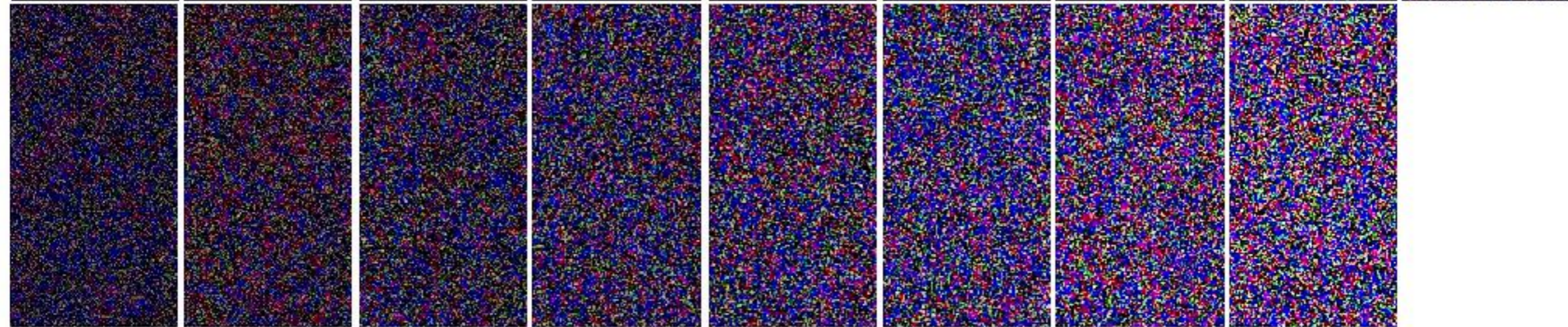
1250

1600

2000

2500

3200



best practice is to shoot for 1/60th of second

## in class shooting assignment:

in groups of 2 or 3, make screen tests, or video portraits of one another. Everyone needs to every other person in their group.

Each person must produce two 30+ second clips of each individual group members with the following **accurately** addressed:

- + **Still Camera** - you MUST use a tripod (or figure out a way to secure the camera) !!
- + **Exposure** - Shadows & Highlights, detail in both
- + **White Balance** - A generally well balanced image - look out for QC's florescent green light!
- + **Manual Focus** - An Intentionally Focused Image
- + **Sound** - be sure to find a quiet location w/ suitable acoustics

get creative!



you can not change the f Stop in **Live Mode**

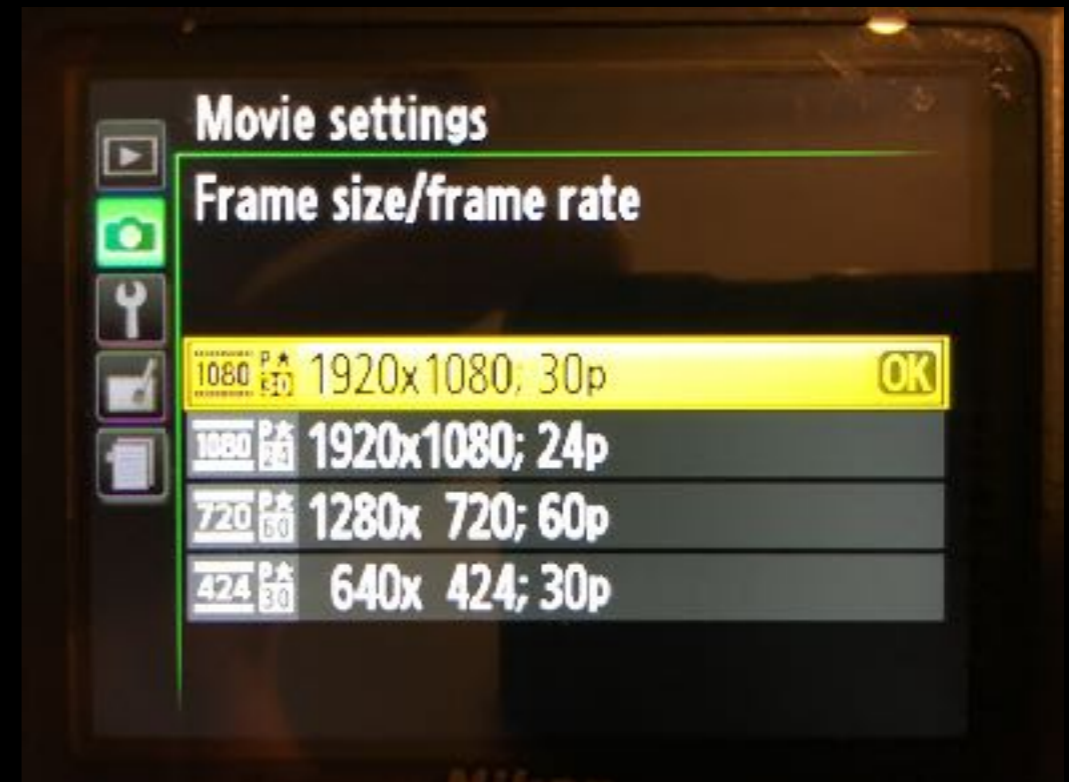
(decide what depth of field you want before you begin the shot)

## Nikon Camera Settings:

- NTSC
- 1920 x 1080 @ 30 fps
- Manual movie settings - TURNED ON
- Manual Focus



- ★ **live mode**
- ★ **live mode**
- ★ **live mode**



**Frame Rate  
is not  
Shutter Speed !**

[let's watch](#)



Frame Rate = Images per second

Shutter Speed = Exposure of each frame

Frame Rate x 2 = Shutter Speed

30p

1/60

[vimeo tutorial](#)

**1920 x 1080 px**

Name: myStopMotion

Location: /Volumes/makingAreWe/QC/2018/myStopMotion

Browse...

General

Scratch Disks

Ingest Settings

Video Rendering and Playback

Renderer: Mercury Playback Engine GPU Acceleration (OpenCL)

Video

Display Format: Timecode

Audio

Display Format: Audio Samples

Capture

Capture Format: HDV

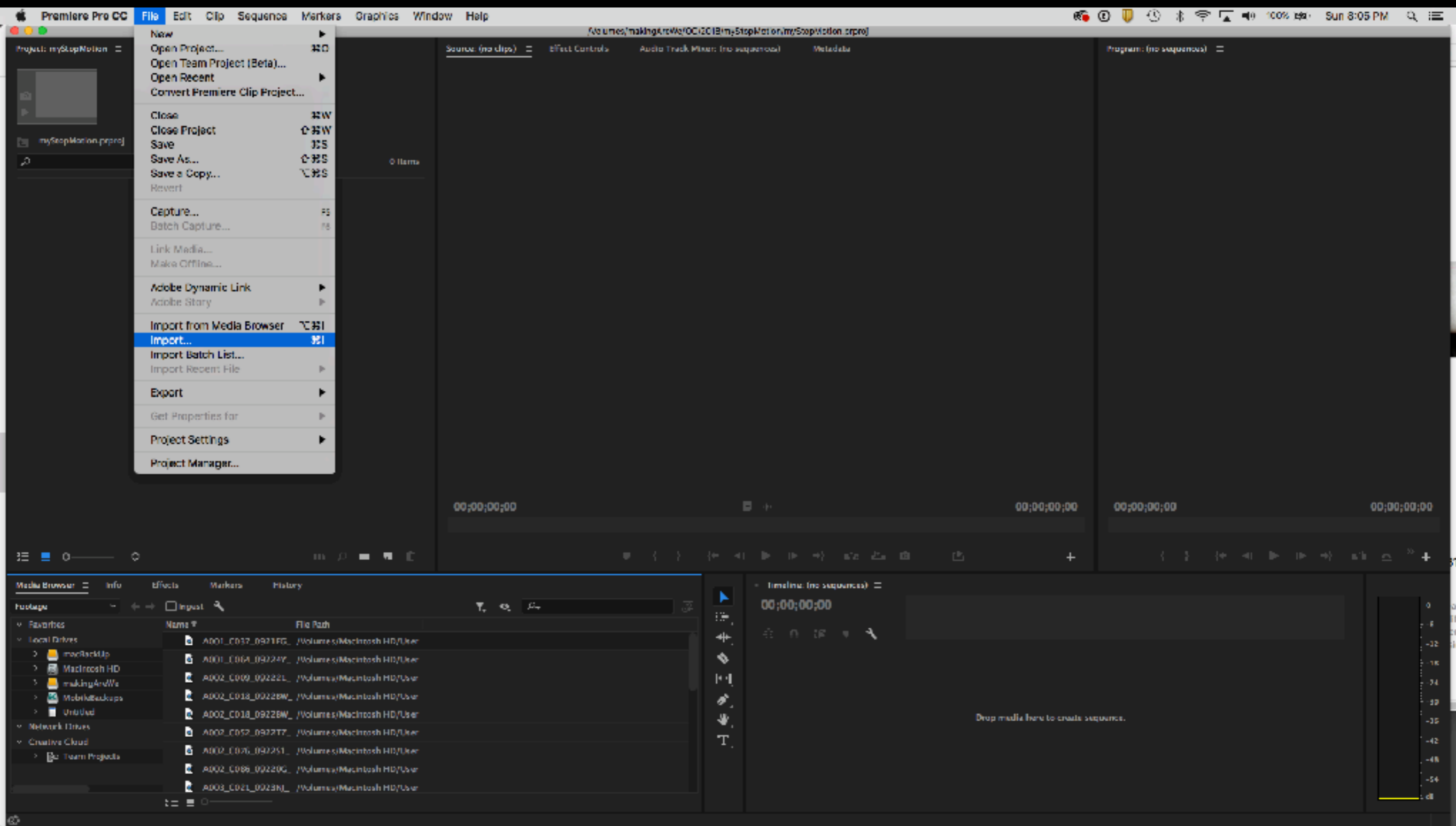
 Display the project item name and label color for all instances

You should set the FILE PATH. And that all of your assets are in your project folder.

Cancel

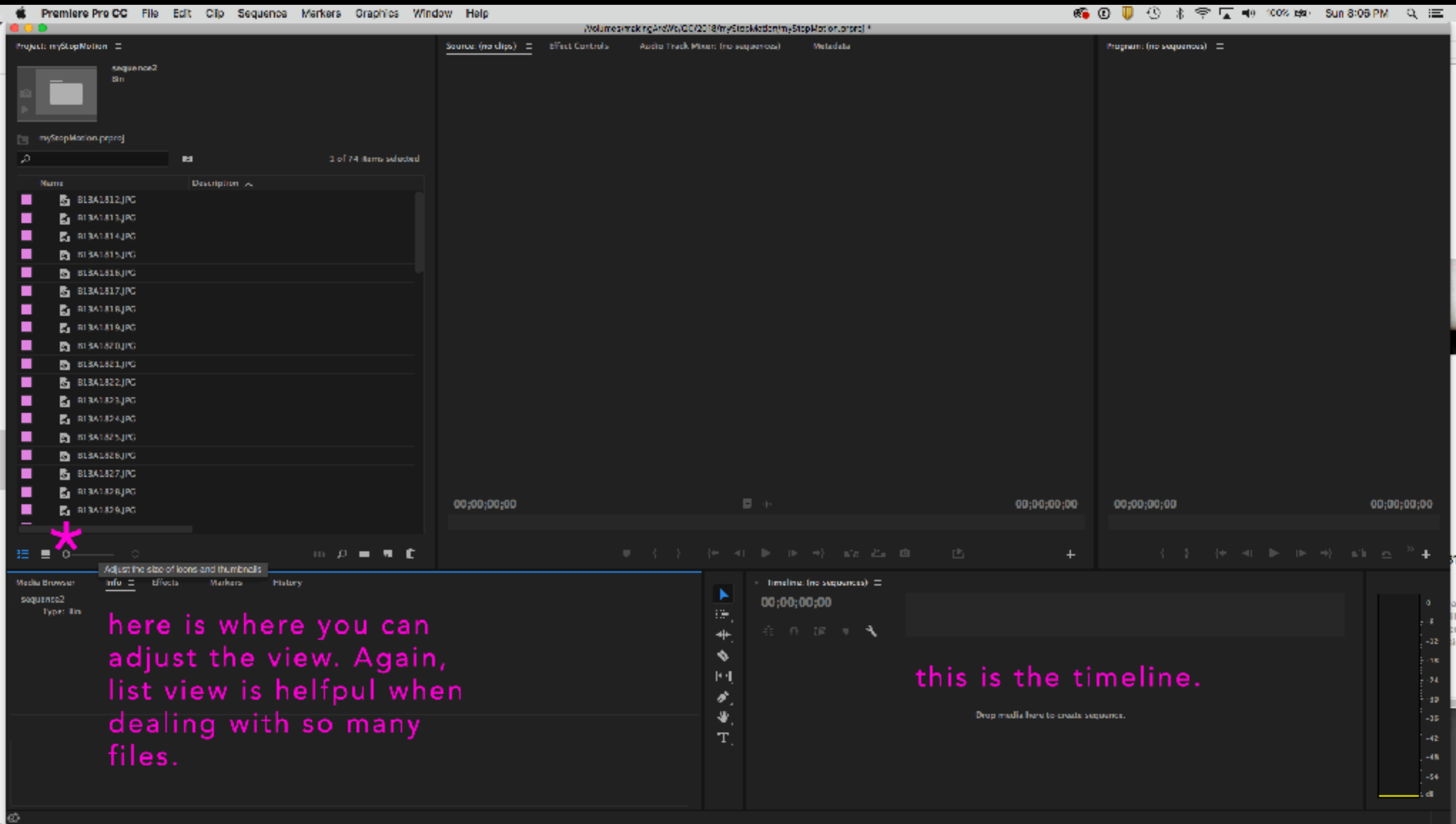
OK

Adobe Premiere: open a new project.



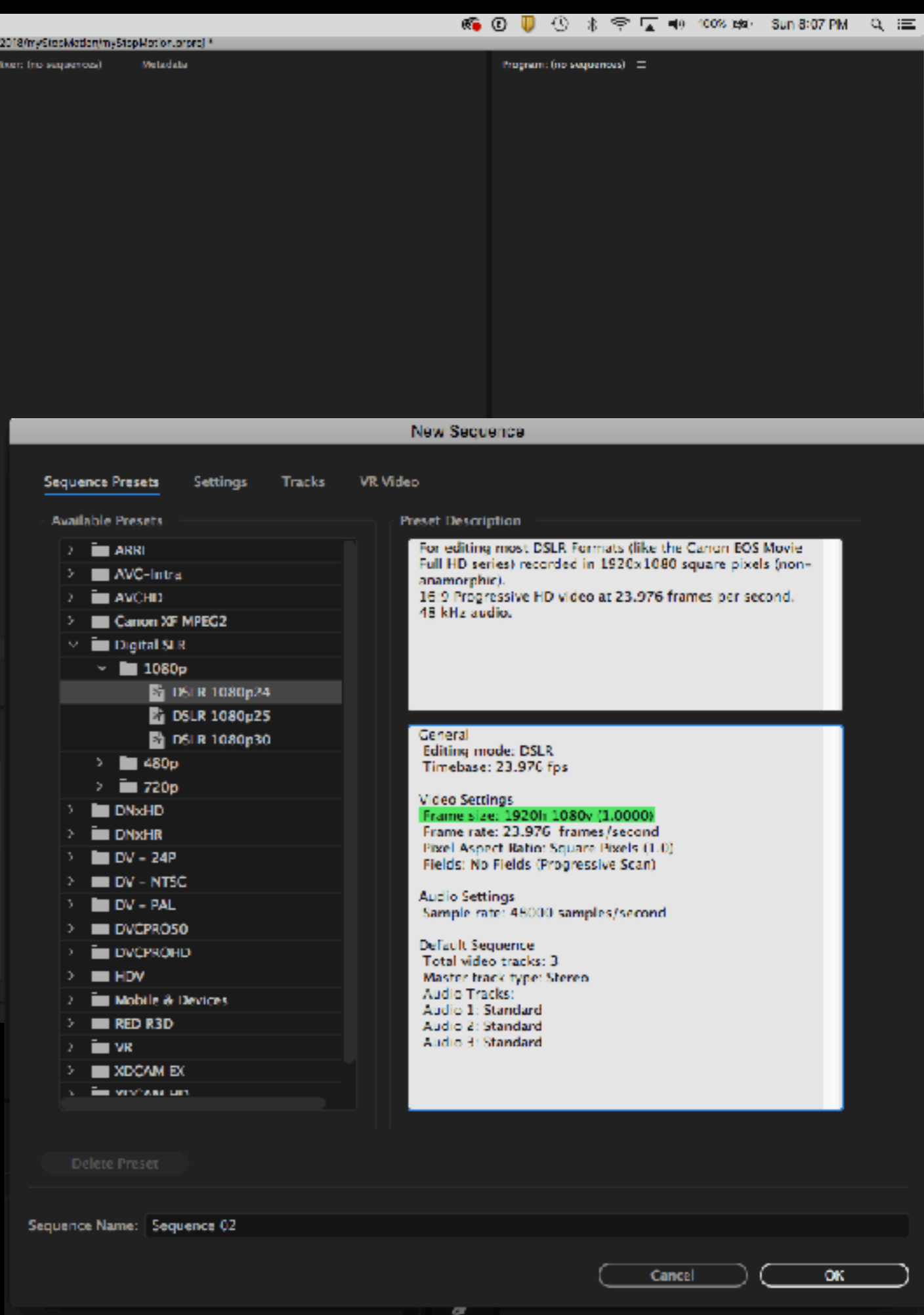
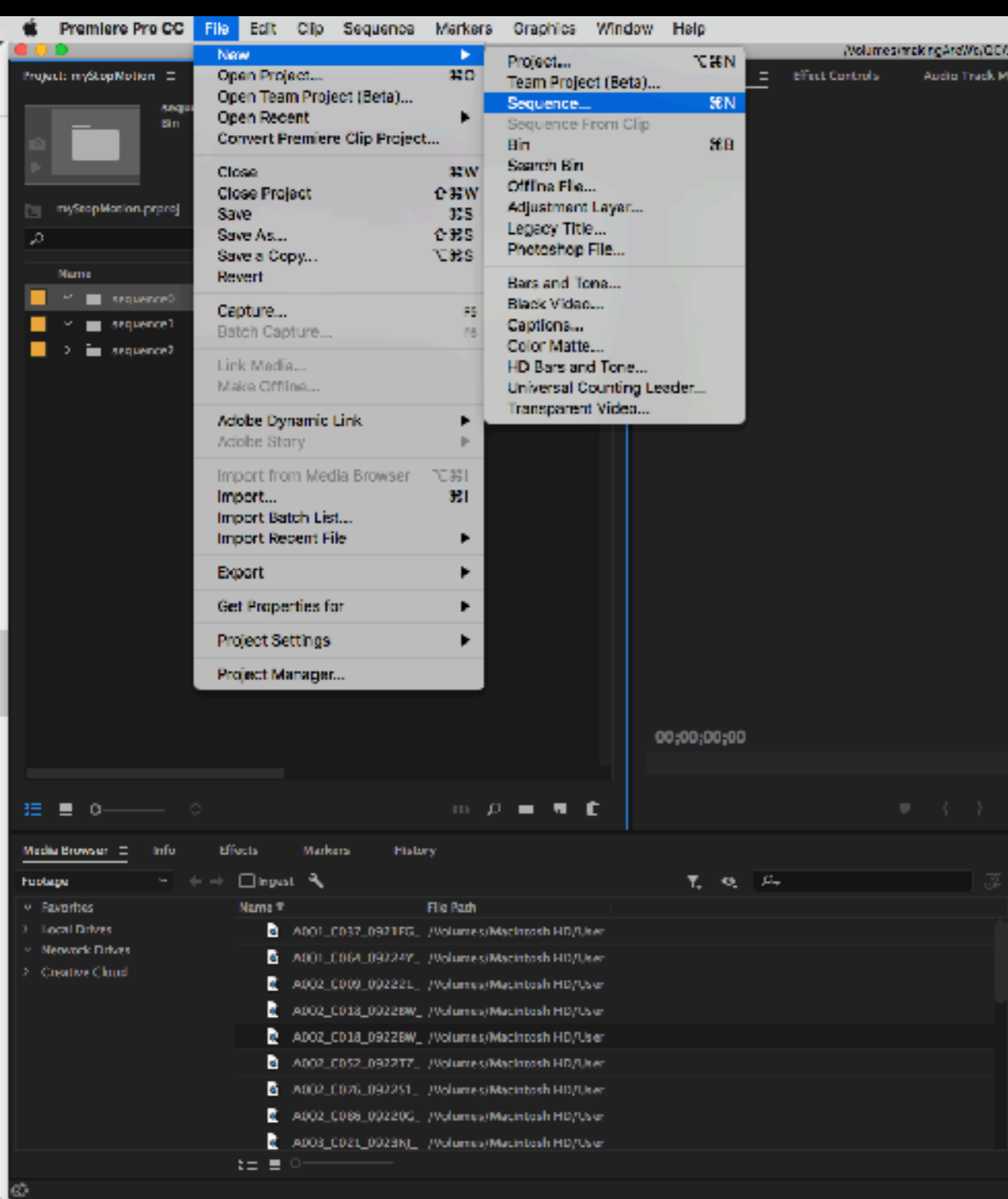
File > Import...

import the images

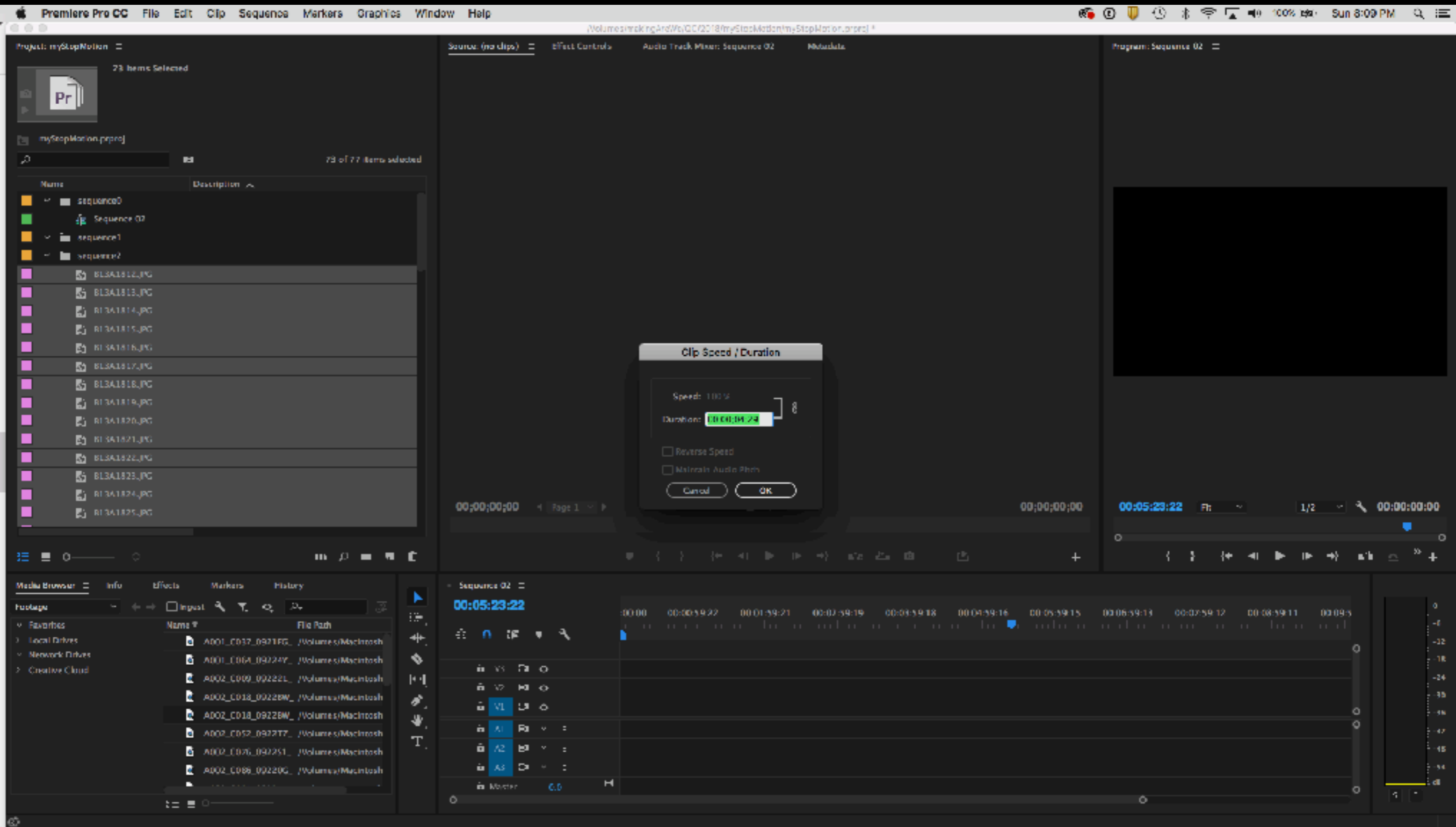


Organize your files.  
Make bins - folders for each sequence

CTRL + click > New Bin



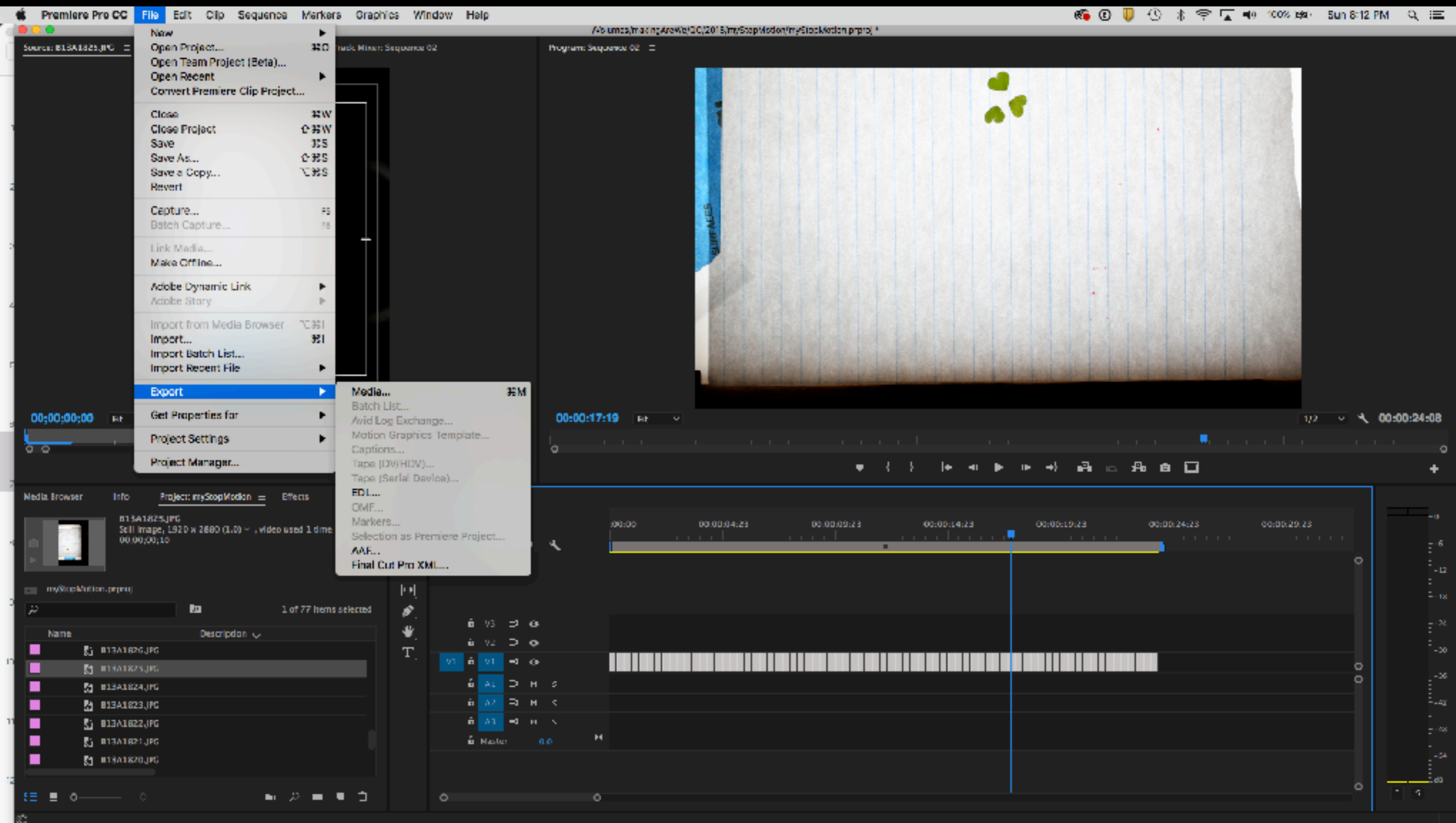
Make a new sequence @ 1920 x 1080



Change the duration of each image.

Hold down CONTROL + click on the flies.  
Select Clip Speed / Duration





Export the images in the sequence as a video file  
H.264 @ 1920 x 1080

Export Settings

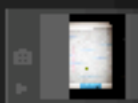
Source: B13A1822 Source Output

Source Scaling: Scale to Fit



00:00:00:00

Media Browser



myVideoMusic

Name

- B13A1822.JPG
- B13A1821.JPG
- B13A1820.JPG

00:00:13:03 00:00:24:08

Source Range: Work Area

0.3

Master 0.0

Report Settings

Match Sequence Settings

Format: H.264

Preset: HD 1080i 29.97 (1.33 PAR)

Comments:

Output Name: Sequence02.mp4

Export Video  Export Audio

Summary

Output: (Volume.../2018/myStopMotion/Sequence2/Sequence02.mp4  
1440x1080 (1.3333), 29.97 fps, Upper, 00:00:24:10  
VBR, 2 pass, Target: 24.00 Mbps, Max: 30.00 Mbps  
AAC, 192 kbps, 48 bits, Stereo

Source: Sequence: Sequence 02  
1920x1080 (1.0), 29.976 fps, Progressive, 00:00:24:08  
No Audio

Effects Video Audio Multiplexer Captions Publish

Basic Video Settings

Match Source

Width: 1520

Height: 1080

Frame Rate: 29.97

Field Order: Upper First

Aspect: HD Anamorphic 1080 (1.333)

TV Standard: NTSC

Profile: Main

Level: 4.1

Render at Maximum Depth

Use Maximum Render Quality  Use Previews

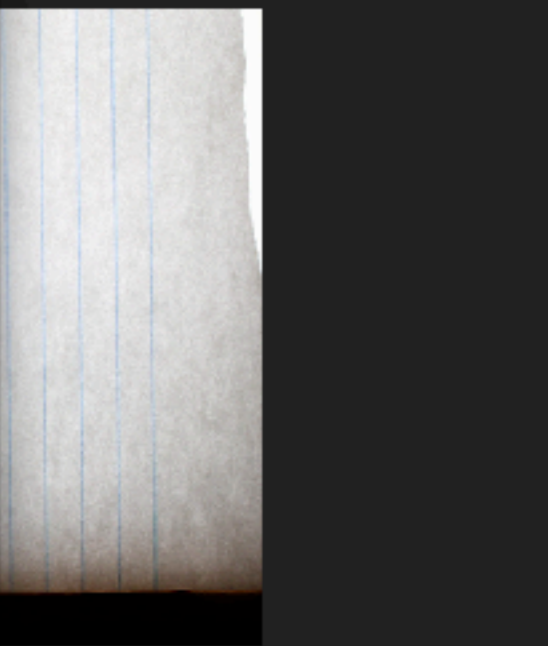
Import into project

Set Start Timecode: 00:00:00:00  Render Alpha Channel Only

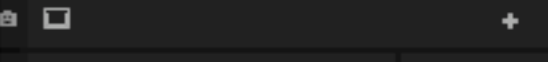
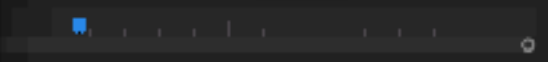
Time Interpolation: Frame Sampling

Estimated File Size: 70 MB

Master... Queue Export Cancel



1/2 00:00:24:08



00:00:24:25 00:00:29:25

0 6 12 18 24 30 36 42 48 54 60

Source Output

Source Scaling: Scale To Fit



This should be 1920 x 1080 for dslr footage

Quicktime or H.264

Export Settings

Match Sequence Settings

Format: H.264

Preset: Match Source - High bitrate

Comments:

Output Name: IMG\_0033.mp4

Export Video  Export Audio

click here to assign file path

Summary

Output: /Users/Rebecca/Desktop/qc/.../class4/IMG\_0033.mp4  
 1080x1080 (1.0), 15 fps, Progressive, 00:00:06:25  
 VBR, 1 pass, Target: 10.00 Mbps, Max 12.00 Mbps  
 AAC, 320 kbps, 48 kHz, Stereo

Source: Sequence: IMG\_0033  
 1080x1080 (1.0), 15 fps, Progressive, 00:00:06:25  
 No Audio

Effects Video Audio Multiplexer Captions Publish

Basic Video Settings

Match Source

Width: 1,080

Height: 1,080

Frame Rate: 15

Field Order: Progressive

Aspect: Square Pixels (1.0)

TV Standard:  NTSC  PAL

Profile: Main

Level: 4.1

Render at Maximum Depth

- Use Maximum Render Quality  Use Previews
- Import into project
- Set Start Timecode: 00:00:00:00  Render Alpha Channel Only

Time Interpolation: Frame Sampling

Estimated File Size: 8 MB

Metadata... Queue Export Cancel

00:00:02:01



Fit



00:00:06:25



Source Range: Work Area

## hw:

Using your images from your storyboards - make a video with sound. Take the images into a timeline in Adobe Premiere and add sound effects and / or music. Think of it as a movie told in still images.

For more details about this week's assignment:

<https://github.com/rebleo/introVideoFall2018/wiki/Week-04>